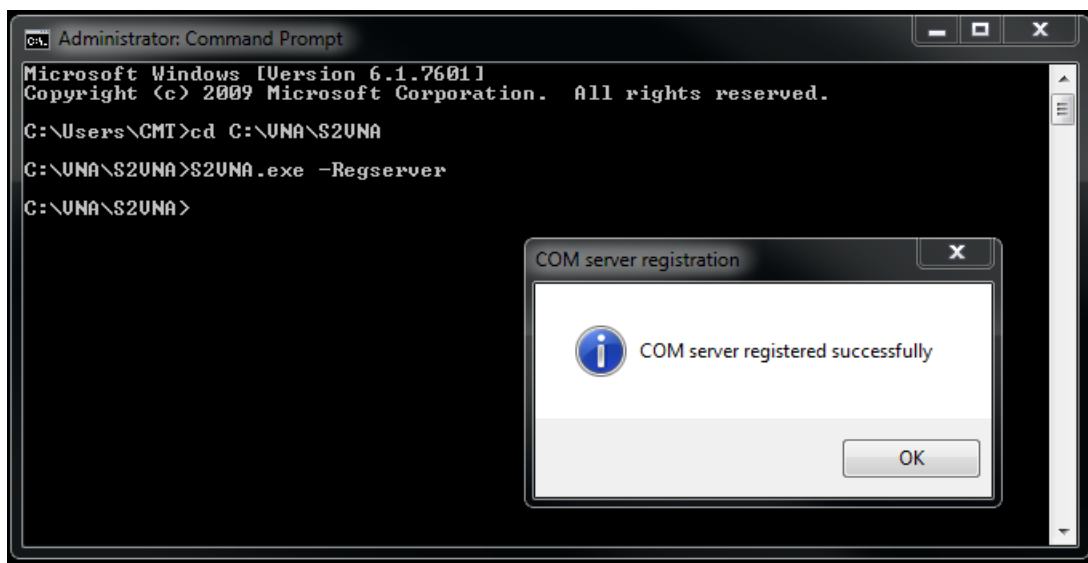


Automating any of Copper Mountain Technology's VNAs in VEE follows a similar structure to the automation procedure for other environments; the key step lies in setting up the COM server connection. The following example is based on Agilent VEE Pro 9.3, though other versions of VEE involve a similar procedure.

Before starting, install the VNA software application and ensure that the COM server for the VNA you are using is registered during installation. The latest version of the VNA software is always available for download at [www.coppermountaintech.com](http://www.coppermountaintech.com).

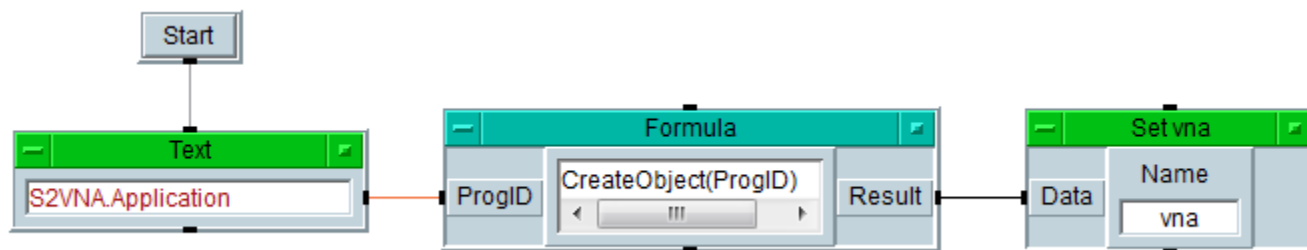
To register the COM server if the VNA software installation has already completed, open up a command prompt and execute the following commands:



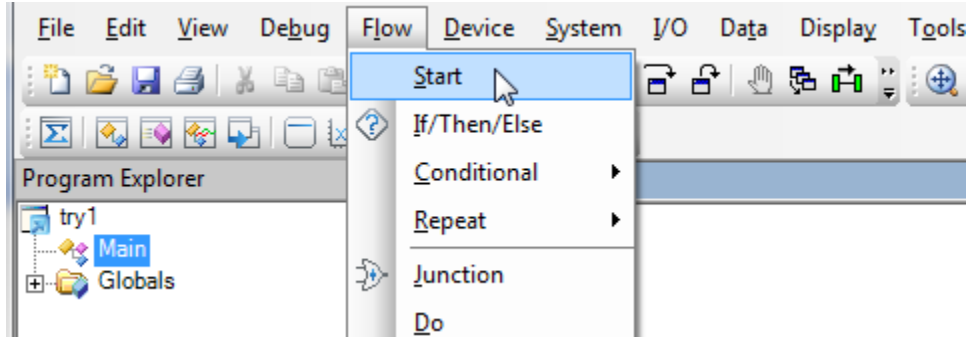
(Note: this path is for the S2VNA. Check the programming manual for specific file paths of other instruments.)

This command will register or re-register the COM server and the confirmation dialogue box will appear. If an error occurs, be sure you have administrator privileges. For assistance, please contact [support@coppermountaintech.com](mailto:support@coppermountaintech.com).

Once the COM server is registered, the following sequence of VEE commands can be applied to start the connection.



1) Choose *Start* from *Flow*

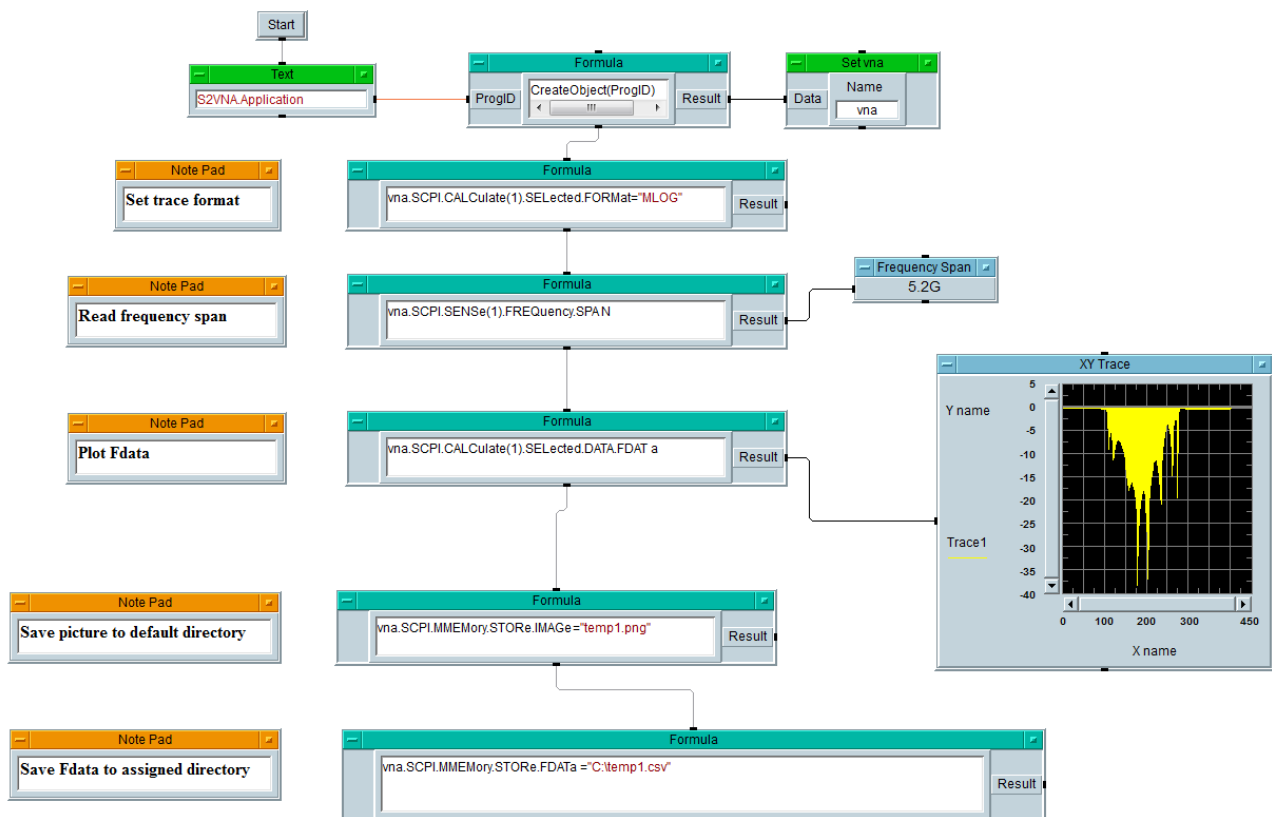


2) Choose *Text* from *Data -> Constant*

3) Choose *Formula* from *Device*

4) Choose *Set Variable* from *Data -> Variable*

The attached screenshot demonstrates the syntax for setting parameter, read data and save data.



For additional assistance, please contact [support@coppermountaintech.com](mailto:support@coppermountaintech.com) and we will be glad to help!